



26th May 2014

PRESS CONFERENCE

Radmila Čičković, PhD,

Republika Srpska Institute of Statistics, Director General

2012

The most profitable enterprises
in the section *Information and communication*



2013

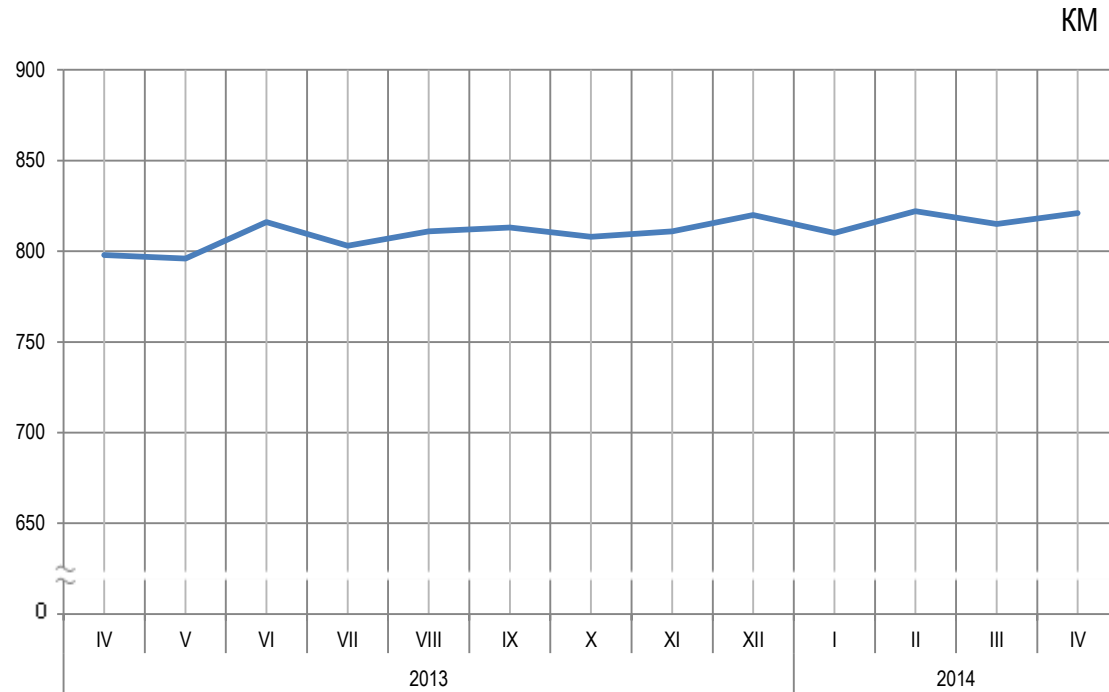
The right to child support realised by **26,534**
beneficiaries



APRIL 2014

- Average monthly net wage **821 KM**
- Average monthly gross wage **1,323 KM**





Graph 1. Average net wages of employed persons by month



APRIL 2014

- Monthly inflation **-1.0%**
- Annual inflation (April 2014/April 2013) **-1.7%**



APRIL 2014

increase in prices

- Division *Food and non-alcoholic beverages* **0.7%**
- Division *Clothing and footwear* **0.6%**

decrease in prices

- Division *Housing* **10.1%**
- Division *Transport* **0.2%**



APRIL 2014

Producer prices of industrial products on domestic market:

- April 2014/March 2014 **0.1%** lower
- April 2014/April 2013 **1.1%** lower



APRIL 2014

Producer prices of industrial products on non-domestic market:

- April 2014/March 2014 **0.1%** higher
- April 2014/April 2013 **0.7%** lower



Index of industrial production:

April 2014/March 2014

Seasonally adjusted industrial production remained **at the same level**



EMPLOYEES IN INDUSTRY

April 2014/April 2013

Number of employees in industry increased by **2.0%**



JANUARY - APRIL 2014

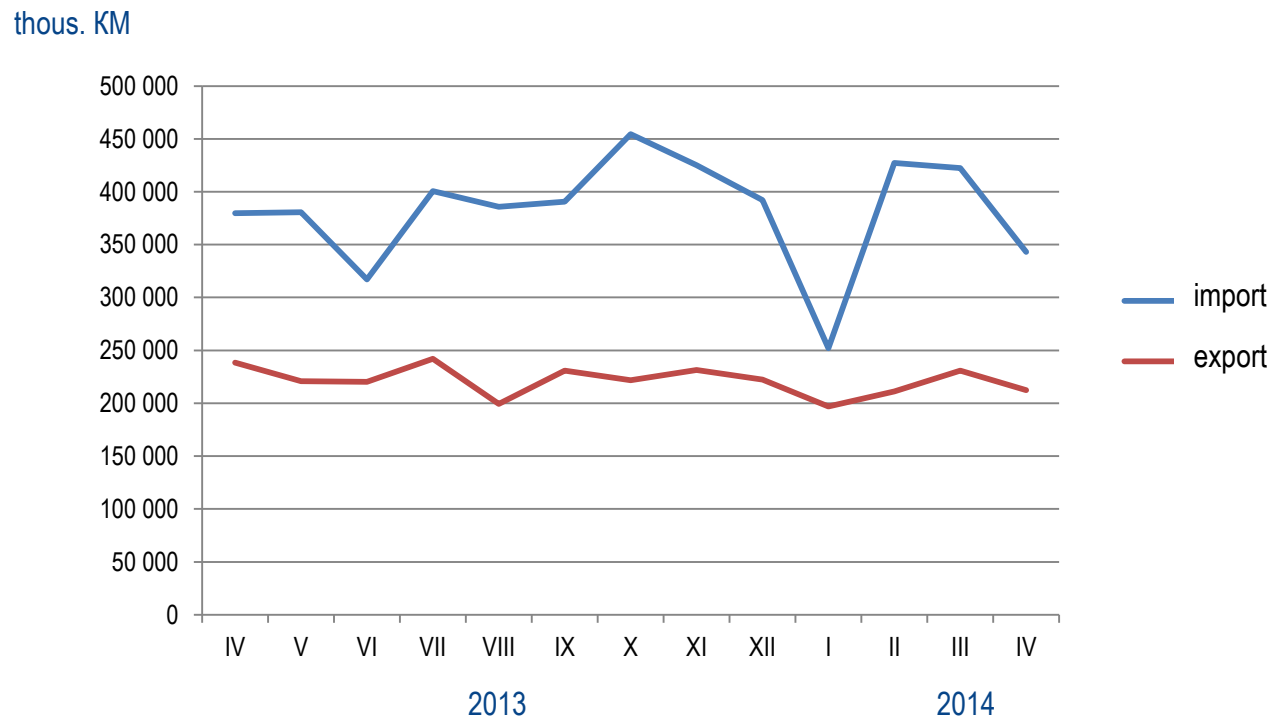
Volume of external trade of Republika Srpska **2 billion and 295.9 million KM**

EXPORT 851 million KM

IMPORT 1 billion and 444 million KM

- Coverage of import with export **58.9%**





Graph 2. Export and import by month

JANUARY – APRIL 2014

EXPORT:

- Italy 18.0% or 154 million KM
- Serbia 14.8% or 126 million KM
- Croatia 10.9% or 93 million KM

IMPORT:

- Russia 19.5% or 281 million KM
- Serbia 15.7% or 227 million KM
- Italy 11.2% or 161 million KM





26th May 2014

PRESS CONFERENCE