



23rd April 2014

PRESS CONFERENCE

Radmila Čičković, PhD,

Republika Srpska Institute of Statistics, Director General

4TH QUARTER 2013

- Increase in GDP 2.0%



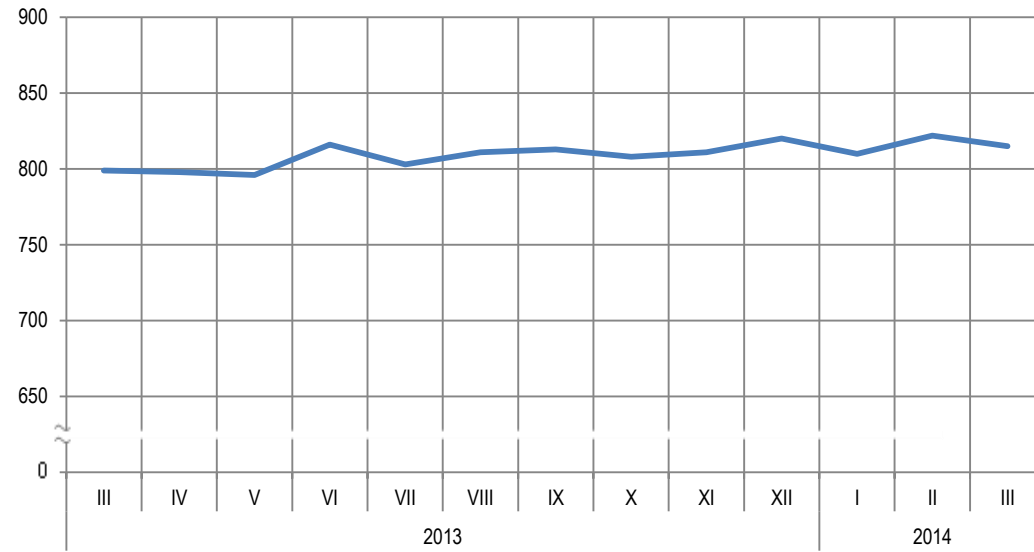
MARCH 2014

- Average monthly net wage **815 KM**
- Average monthly gross wage **1,316 KM**





KM



Graph 1. Average net wages of employed persons by month



MARCH 2014

- Monthly inflation **0.0%**
- Annual inflation (March 2014/March 2013) **-1.7%**



MARCH 2014

increase in prices

- Division *Clothing and footwear* **1.6%**
- Division *Furnishing and other equipment* **0.2%**

decrease in prices

- Division *Food and non-alcoholic beverages* **0.2%**
- Division *Recreation and culture* **0.2%**



MARCH 2014

Producer prices of industrial products on domestic market :

- March 2014/February 2014 **0.0%**
- March 2014/March 2013 **1.2% lower**



MARCH 2014

Producer prices of industrial products on non-domestic market :

- March 2014/February 2014 **0.2%** lower
- March 2014/March 2013 **1.2%** lower



INDEX OF INDUSTRIAL PRODUCTION:

March 2014/March 2013

Increase in working-day adjusted industrial production **1.4%**



EMPLOYEES IN INDUSTRY

March 2014/March 2013

Number of employees in industry increased by **2.4%**



JANUARY - MARCH 2014

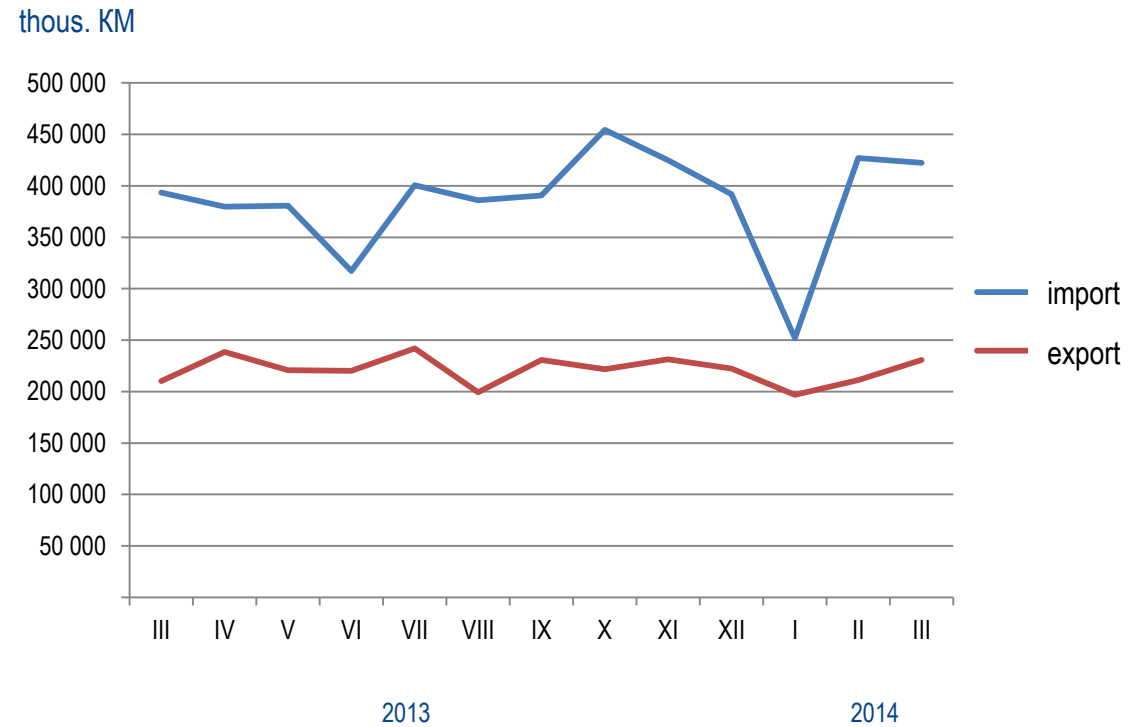
Volume of external trade of Republika Srpska **1 billion and 740 million KM**

EXPORT 639 million KM

IMPORT 1 billion and 101 million KM

- Coverage of import with export **58.0%**





Graph 2. Export and import by month

JANUARY - MARCH 2014

EXPORT:

- Italy 17.6% or 112 million KM
- Serbia 15.0% or 96 million KM
- Croatia 11.1% or 71 million KM

IMPORT:

- Russia 23.6% or 259 million KM
- Serbia 14.6% or 161 million KM
- China 11.2% or 124 million KM





23rd April 2014

PRESS CONFERENCE